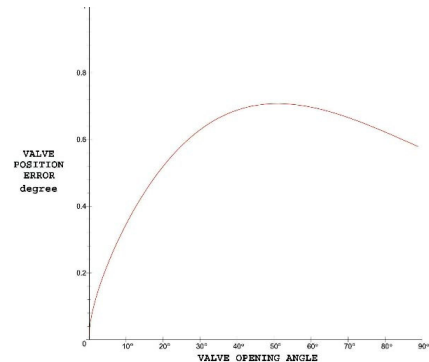
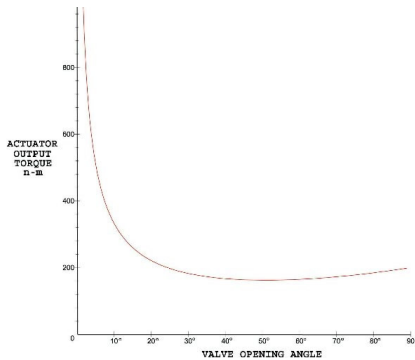
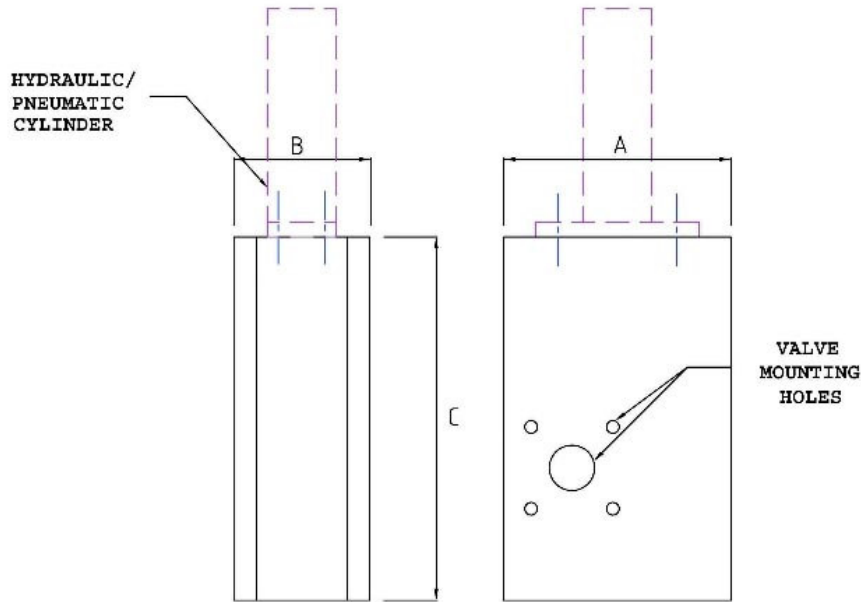


Expro Type LR Linear to Rotary Actuators Actuator Parameters

Model	Output Torque n-m(lbs-in)	A Length mm(inch)	B Width mm(inch)	C Height mm(inch)	Cylinder Bore mm(inch)	Cylinder Stroke mm(inch)	Hydraulic Pressure Mpa(PSI)	Output Stroke
LR120	120 (1050)	250 (10")	120 (4")	400 (16")	25 (1.0")	100 (4")	10 (1500)	90°
LR620	620 (5400)	250 (10")	150 (6")	400 (16")	50 (2.0")	100 (4")	10 (1500)	90°
LR1400	1400 (12400)	250 (10")	200 (8")	500 (20")	75 (3.0")	100 (4")	10 (1500)	90°
LR4000	4000 (35400)	300 (12")	250 (10")	500 (20")	125 (5.0")	100 (4") <td 10 (1500)	90°	



Notes:

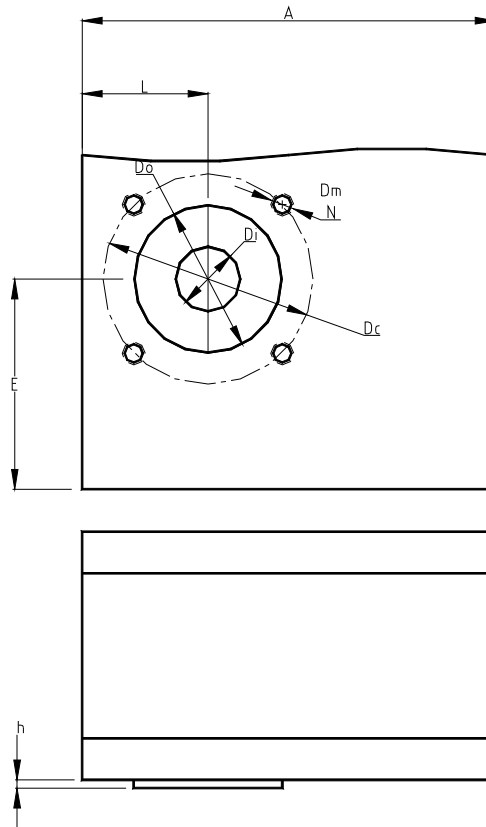
1. The actuator nominal speed is 90°/s. Output torque is minimum torque.
2. The valve position errors are calculated under assumed cylinder 0.5 mm position error.
3. Different output strokes, speed and cylinder strokes are available.
4. Configurations can be modified to meet customers' specifications.
5. Contact **Expro Engineering** to discuss your specifications. **Expro** will make it work for you.

Expro Engineering
7500 Thunderbird Rd. Liverpool, NY 13088

Phone:
(315) 453-0515

Fax:
(315) 451-5193

Email:
contact@exproengineering.com



Mounting Dimensions for LR Actuators

Dimension Data

Model Type	A	E	L	Do f8	h max	Dc	Dm	No. of bolts N
LR120	250	150	65	55	3	70	M8	4
LR620	250	175	90	100	4	140	M16	4
LR1400	250	200	110	130	5	165	M20	4
LR4000	300	250	150	200	5	254	M16	8

Notes:

2. The standard dimensions meet ISO 5211:2001(E)
2. Configurations can be modified to meet customers' specifications.