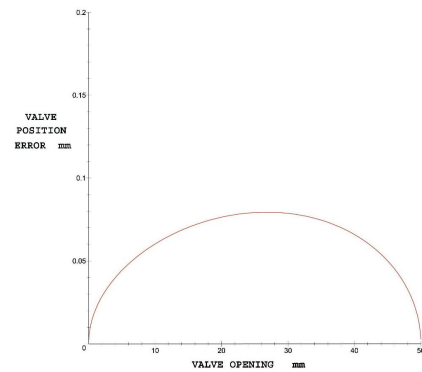
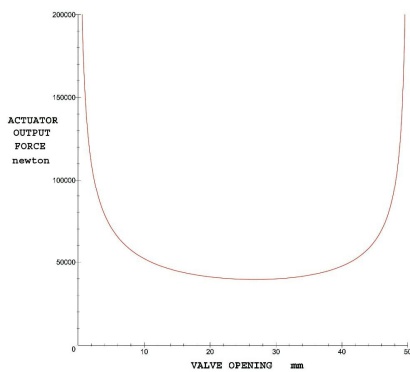
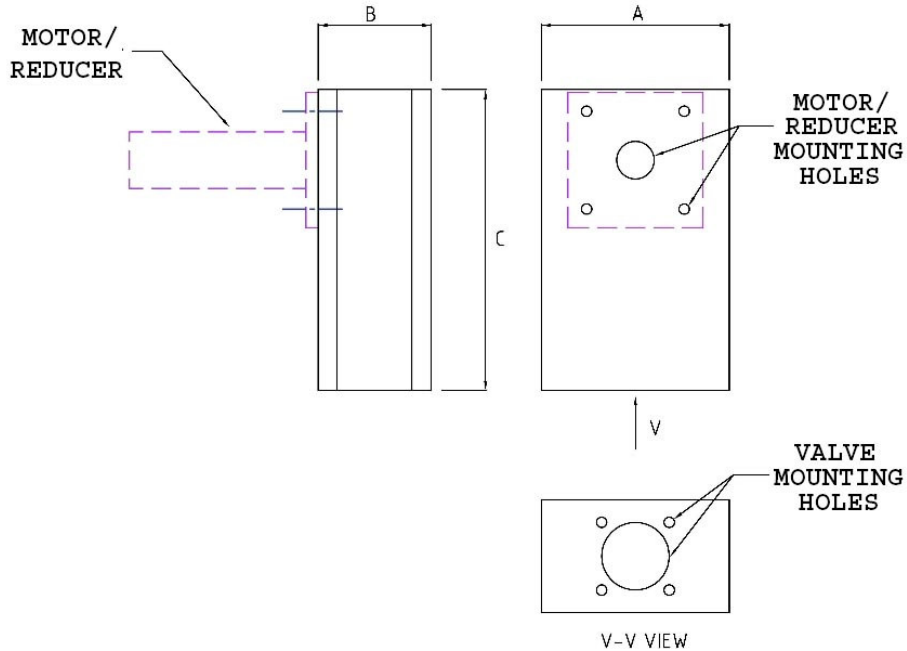


Expro Type RL Rotary to Linear Actuators Actuator Parameters

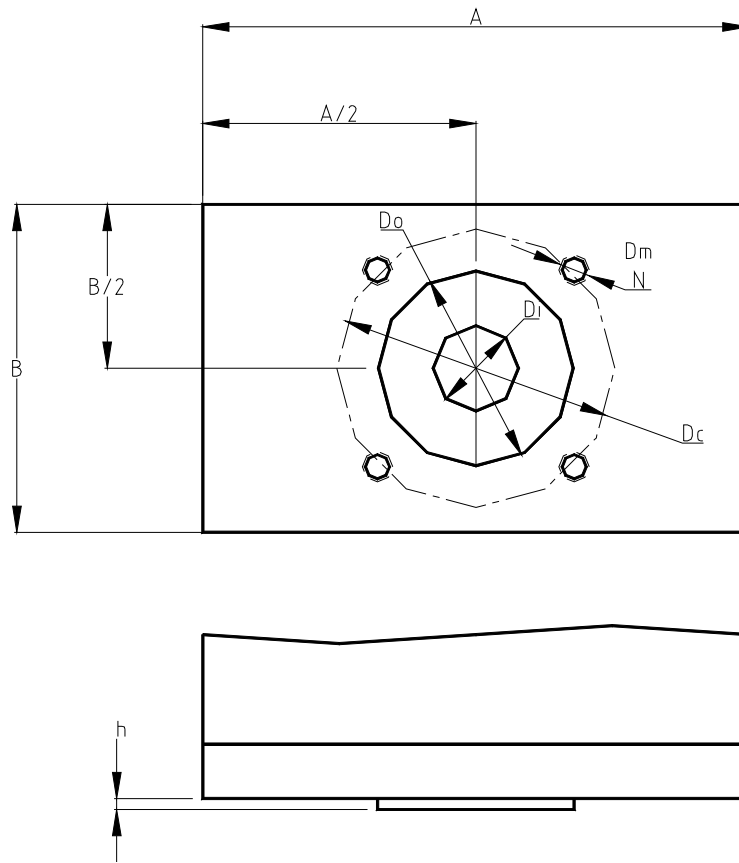
Model	Output Force Newton(Lbs)	A Length mm(inch)	B Width mm(inch)	C Height mm(inch)	Motor Power KW(HP)	Reducer Ratio	Motor Speed RPM	Output Stroke mm(inch)
RL3000	3000 (700)	250 (10")	120 (4")	400 (16")	0.2 (0.24)	100 : 1	3000	50 (2.0")
RL15000	15000 (3500)	250 (10")	150 (6")	400 (16")	0.9 (1.2)	100 : 1	3000	50 (2.0")
RL35000	35000 (8000)	250 (10")	175 (7")	450 (18")	2.1 (2.8)	100 : 1	3000	50 (2.0")
RL100000	100000 (22500)	250 (10")	200 (8")	450 (18")	6.0 (8.0)	100 : 1	3000	50 (2.0")



Notes:

1. The actuator nominal speed is 50 mm/s. Output force is minimum force.
2. The valve position errors are calculated under assumed reducer 0.5 degree position error.
3. Different output strokes, speed and cylinder strokes are available.
4. Configurations can be modified to meet customers' specifications.
5. Contact **Expro Engineering** to discuss your specifications. **Expro** will make it work for you.

Expro Engineering **Phone:** (315) 453-0515 **Fax:** (315) 451-5193 **Email:** contact@exproengineering.com
 7500 Thunderbird Rd. Liverpool, NY 13088



Mounting Dimensions for RL Actuators

Dimension Data

Model Type	A	B	Do f8	h max	Dc	Dm	No. of bolts N
RL3000	250	120	30	3	42	M5	4
RL15000	250	150	55	3	70	M8	4
RL35000	250	175	85	3	125	M12	4
RL100000	250	200	130	5	165	M20	4

Notes:

1. The standard dimensions meet ISO 5211:2001(E)
2. Configurations can be modified to meet customers' specifications.