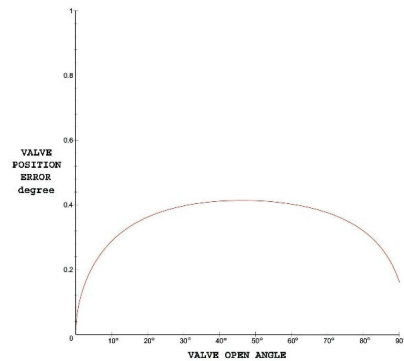
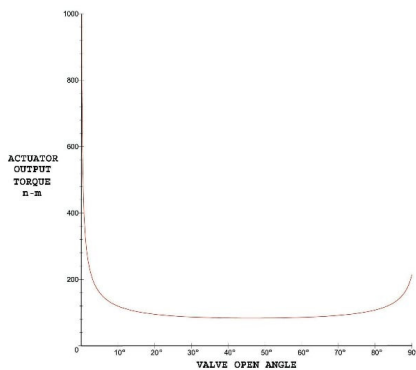
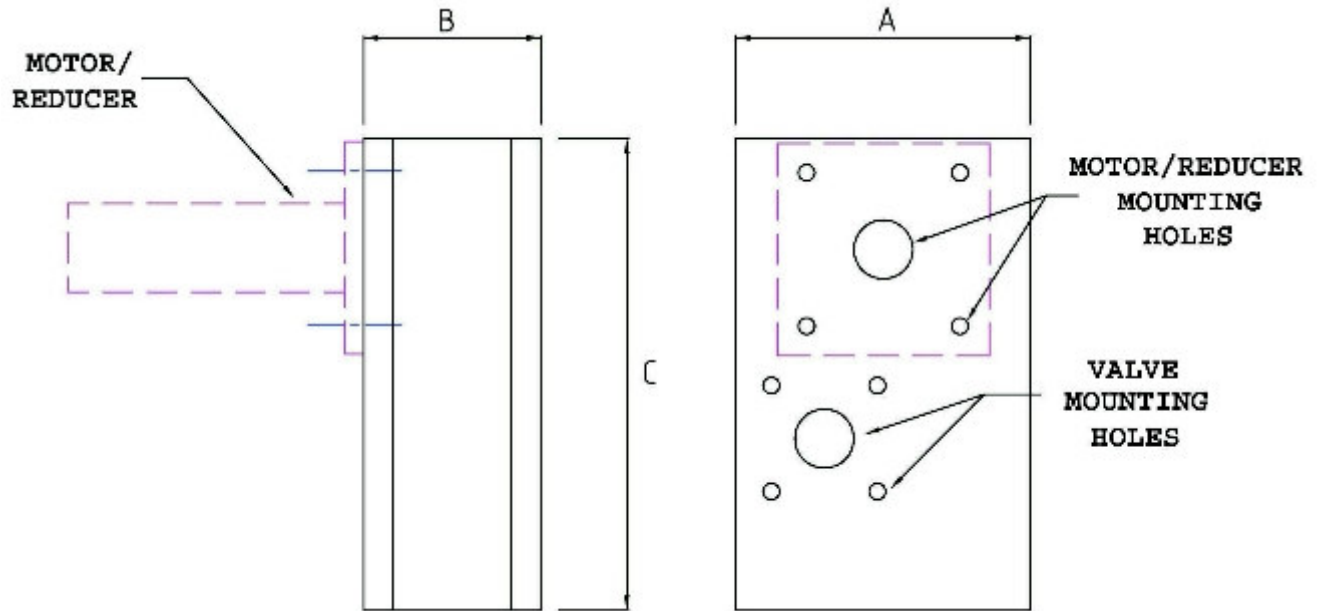


Expro Type RR Rotary to Rotary Actuators Actuator Parameters

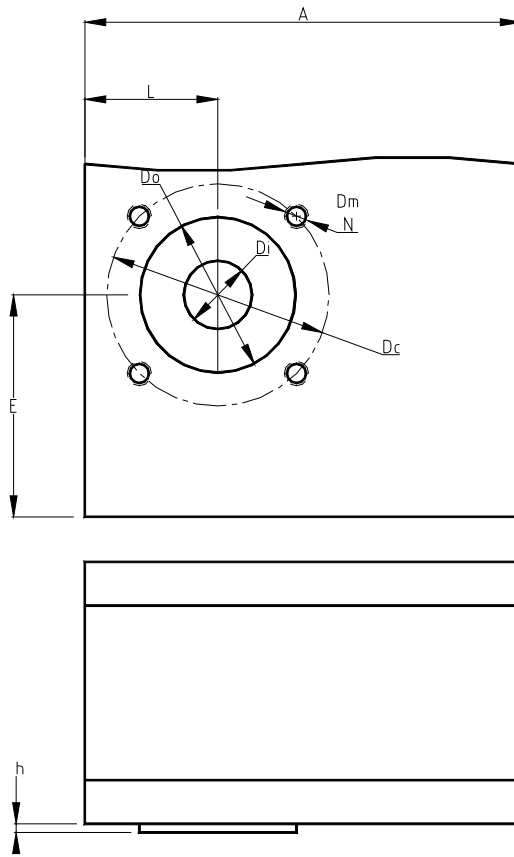
Model	Output Torque n-m(lbs-in)	A Length mm(inch)	B Width mm(inch)	C Height mm(inch)	Motor Power KW(HP)	Reducer Ratio	Motor Speed RPM	Output Stroke
RR80	80 (700)	250 (10")	120 (4")	400 (16")	0.2 (0.24)	100 : 1	3000	90°
RR370	370 (3200)	250 (10")	150 (6")	400 (16")	0.9 (1.2)	100 : 1	3000	90°
RR870	870 (7700)	250 (10")	175 (7")	450 (18")	2.1 (2.8)	100 : 1	3000	90°
RR2500	2500 (22000)	250 (10")	200 (8")	450 (18")	6.0 (8.0)	100 : 1	3000	90°



Notes:

1. The actuator nominal speed is 90°/s. Output torque is minimum torque.
2. The valve position errors are calculated under assumed reducer 0.5 degree position error.
3. Different output strokes, speed and cylinder strokes are available.
4. Configurations can be modified to meet customers' specifications.
5. Contact **Expro Engineering** to discuss your specifications. **Expro** will make it work for you.

Expro Engineering
7500 Thunderbird Rd. Liverpool, NY 13088
Phone:
(315) 453-0515
Fax:
(315) 451-5193
Email:
contact@exproengineering.com



Mounting Dimensions for RR Actuators

Dimension Data

Model Type	A	E	L	Do f8	h max	Dc	Dm	No. of bolts N
RR80	250	150	65	55	3	70	M8	4
RR370	250	165	80	85	3	125	M12	4
RR870	250	175	90	100	4	140	M16	4
RR2500	250	200	110	130	5	165	M20	4

Notes:

3. The standard dimensions meet ISO 5211:2001(E)
2. Configurations can be modified to meet customers' specifications.