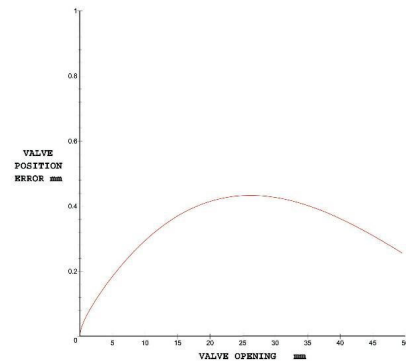
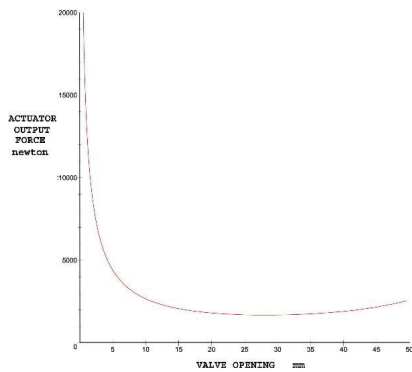
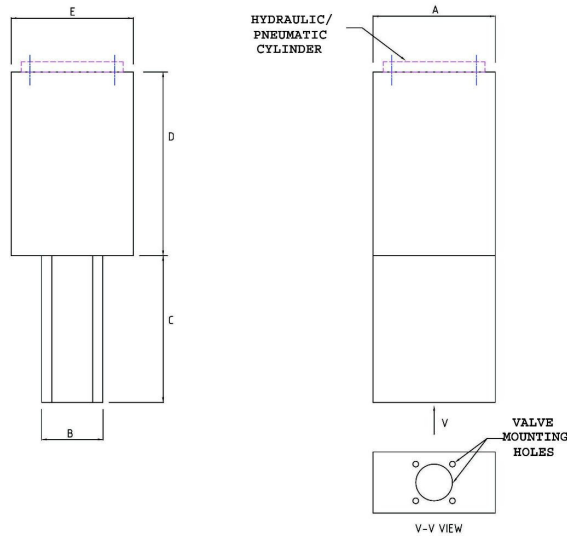


Expro Type SL Spring Return Linear Actuators

Actuator Parameters

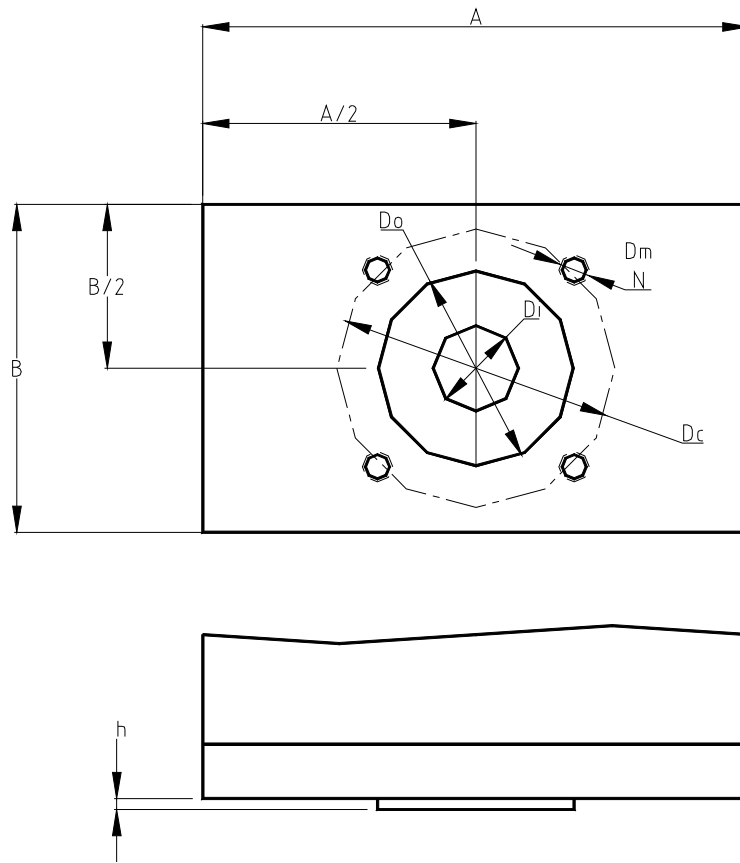
Model	Output Force Newton(Lbs)	A Length mm(inch)	B Width mm(inch)	C Height mm(inch)	D S.H.H. mm(inch)	E S.H.W. mm(inch)	Cylinder Bore mm(inch)	Cylinder Stroke mm(inch)	Hydraulic Pressure Mpa(PSI)	Output Stroke mm(inch)
SL1500	1500 (350)	300 (12")	120 (4")	375 (15")	450 (18")	300 (12")	25 (1.0")	100 (4")	10 (1500)	50 (2")
SL7500	7500 (1700)	350 (14")	150 (6")	375 (15")	450 (18")	350 (14")	50 (2.0")	100 (4")	10 (1500)	50 (2")
SL17500	17500 (4000)	350 (14")	175 (7")	425 (18")	450 (18")	350 (14")	75 (3.0")	100 (4")	10 (1500)	50 (2")
SL50000	50000 (11000)	375 (15")	200 (8")	425 (18")	550 (22")	375 (15")	125 (5.0")	100 (4")	10 (1500)	50 (2")



Notes:

1. The actuator nominal speed is 50 mm/s. Output force is minimum force.
2. The valve position errors are calculated under assumed cylinder 0.5 mm position error.
3. Fail-safe operation time can be between 100 ms and 500 ms, depending on the configuration.
4. Configurations can be modified to meet customers' specifications.
5. Contact **Expro Engineering** to discuss your specifications. **Expro** will make it work for you.

Expro Engineering **Phone:** (315) 453-0515 **Fax:** (315) 451-5193 **Email:** contact@exproengineering.com
 7500 Thunderbird Rd. Liverpool, NY 13088



Mounting Dimensions for SL Actuators

Dimension Data

Model Type	A	B	Do f8	h max	Dc	Dm	No. of bolts N
SL1500	300	120	30	3	42	M5	4
SL7500	350	150	55	3	70	M8	4
SL17500	350	175	85	3	125	M12	4
SL50000	375	200	130	5	165	M20	4

Notes:

2. The standard dimensions meet ISO 5211:2001(E)
3. Configurations can be modified to meet customers' specifications.