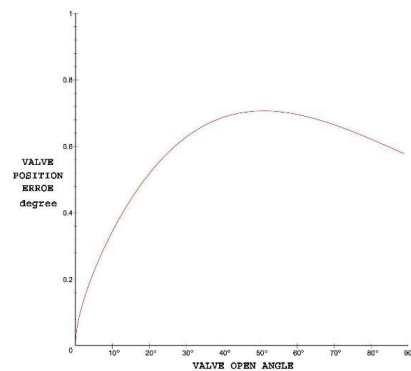
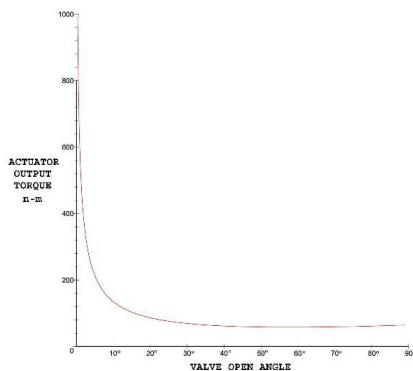
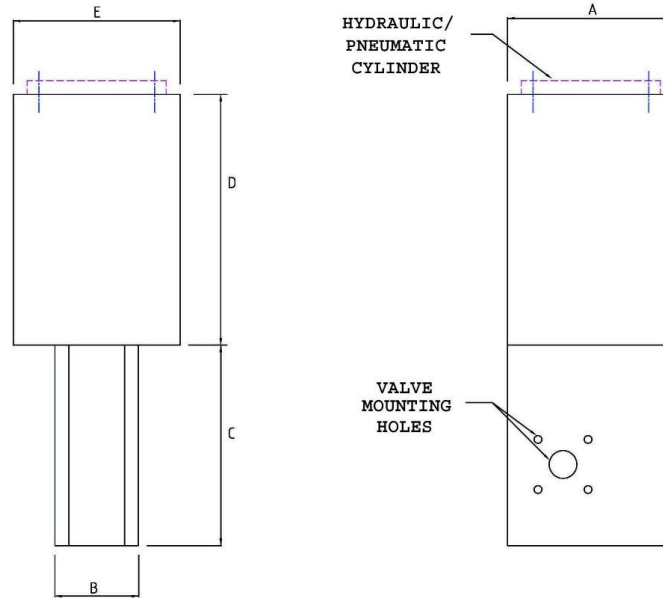


Expro Type SR Spring Return Rotary Actuators

Actuator Parameters

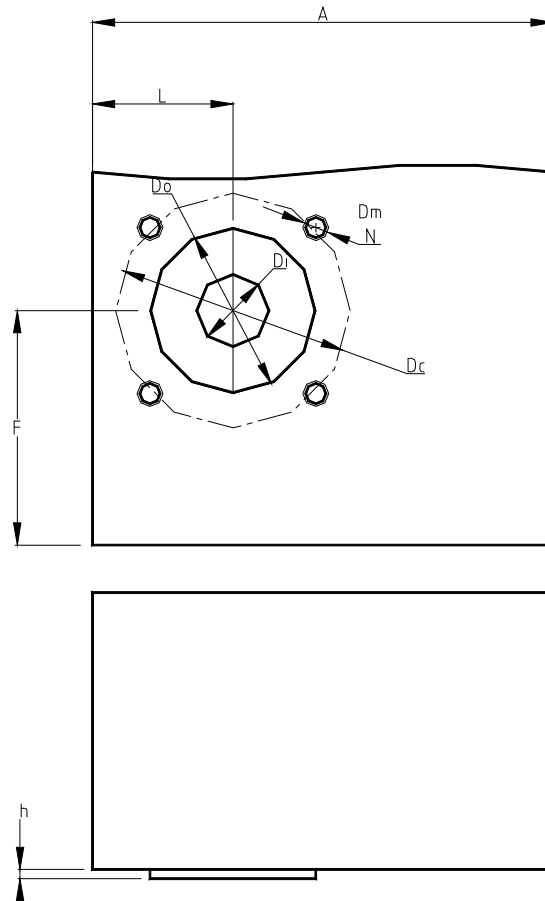
Model	Output Torque n-m(lbs-in)	A Length mm(inch)	B Width mm(inch)	C Height mm(inch)	D S.H.H. mm(inch)	E S.H.W. mm(inch)	Cylinder Bore mm(inch)	Cylinder Stroke mm(inch)	Hydraulic Pressure Mpa(PSI)	Output Stroke
SR60	60 (520)	300 (12")	120 (4")	375 (15")	450 (18")	300 (12")	25 (1.0")	100 (4")	10 (1500)	90°
SR310	310 (2700)	350 (14")	150 (6")	375 (15")	450 (18")	350 (14")	50 (2.0")	100 (4")	10 (1500)	90°
SR700	700 (6200)	350 (14")	175 (7")	425 (18")	450 (18")	350 (14")	75 (3.0")	100 (4")	10 (1500)	90°
SR2000	2000 (17700)	375 (15")	200 (8")	425 (18")	550 (22")	375 (15")	125 (5.0")	100 (4")	10 (1500)	90°



Notes:

1. The actuator nominal speed is 90°/s. Output torque is minimum torque.
2. The valve position errors are calculated under assumed cylinder 0.5 mm position error.
3. Fail-safe operation time can be between 100 ms and 500 ms, depending on the configuration.
4. Configurations can be modified to meet customers' specifications.
5. Contact **Expro Engineering** to discuss your specifications. **Expro** will make it work for you.

Expro Engineering
7500 Thunderbird Rd. Liverpool, NY 13088
Phone:
(315) 453-0515
Fax:
(315) 451-5193
Email:
contact@exproengineering.com



Mounting Dimensions for SR Actuators

Dimension Data

Model Type	A	F	L	Do f8	h max	Dc	Dm	No. of bolts N
SR0	250	150	65	55	3	70	M8	4
SR310	250	175	90	100	4	140	M16	4
SR700	250	200	110	130	5	165	M20	4
SR2000	300	250	150	200	5	254	M16	8

Notes:

- The standard dimensions meet ISO 5211:2001(E)
- Configurations can be modified to meet customers' specifications.